

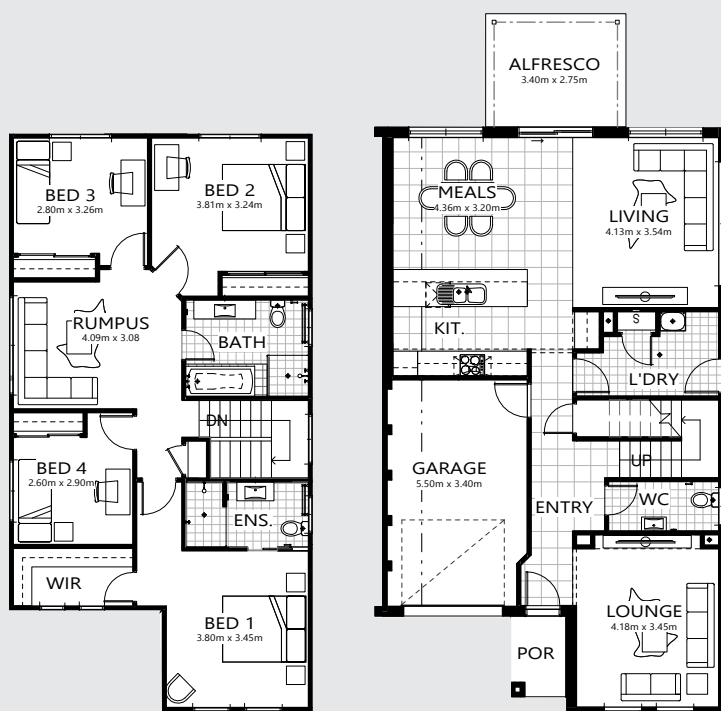


# OAKDALE 230

## HOUSE & LAND \$776,155

# THE HEIGHTS

## RIVERSTONE



4 2 1

**Total Area<sup>†</sup> 230m<sup>2</sup>**  
**Block size 310.1m<sup>2</sup>**

**Lot 10**  
**Off Brighton Street,**  
**Riverstone, NSW 2765**

### PACKAGE FEATURES

- Glazed external entry door
- Reverse cycle air-conditioning
- Satin chrome lever door handles
- Carpet & tiles throughout
- Basswood timber blinds
- Stone kitchen benchtops
- S.S. dishwasher & microwave

- 900mm S.S. canopy rangehood
- Hettich soft close mechanisms
- Wall-hung bathroom vanities
- Keyed alike window locks
- Timber architrave & skirting
- Fitted fly screens
- Border tiles to bathroom & ensuite showers

### ALSO INCLUDES

- All site costs & connections
- Coloured concrete driveway
- Brick letter box
- H1 Slab with retaining as required
- Tiling to alfresco & porch

[www.heightsriverstone.com.au](http://www.heightsriverstone.com.au)

**Georgia Omeara** 0431 611 862  
**Hugo Morvillo** 0425 306 725



<sup>†</sup> Includes garage, alfresco, porch & eaves. \* Images are for illustrative purposes only and may include options not included in price. Bellriver Homes reserves the right to change specifications & prices without notice. Some areas incur additional costs. INK2605-04