



# SURREY 216

## HOUSE & LAND \$781,646

**THE HEIGHTS**  
RIVERSTONE

4 2 2

**Total Area\*** 216m<sup>2</sup>  
**Block size** 402.8m<sup>2</sup>

**Lot 3**  
**Off Brighton Street,**  
**Riverstone, NSW 2765**

### PACKAGE FEATURES

- Glazed external entry door
- Reverse cycle air-conditioning
- Satin chrome lever door handles
- Carpet & tiles throughout
- Basswood timber blinds
- Stone kitchen benchtops
- S.S. dishwasher & microwave
- 900mm S.S. canopy rangehood
- Hettich soft close mechanisms
- Wall-hung bathroom vanities
- Keyed alike window locks
- Timber architrave & skirting
- Fitted fly screens
- Border tiles to bathroom & ensuite showers

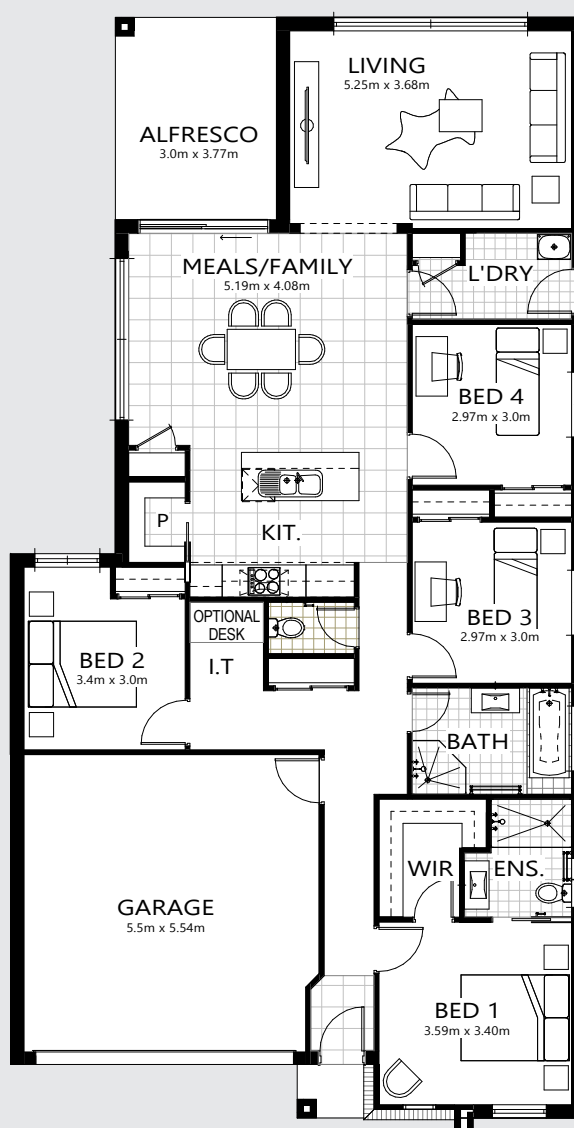
### ALSO INCLUDES

- All site costs & connections
- Coloured concrete driveway
- Brick letter box
- H1 Slab with retaining as required
- Tiling to alfresco & porch

**Georgia Omeara** 0431 611 862

**Hugo Morvillo** 0425 306 725

[www.heightsriverstone.com.au](http://www.heightsriverstone.com.au)



**BELLRIVER**  
COMMUNITIES